

TRAINING MATERIAL

Title:

Spent mushroom compost generated by mushroom production

Training:

What is the product?

Champost or "spent mushroom compost" is a by-product of mushroom cultivation. It is a mixture of mushroom substrate and casing soil. The mushroom substrate consists of horse manure, straw, chicken manure, gypsum and water. The casing soil is composed of peat and lime and lies on top of the substrate. The peat in the casing soil is an excellent water reservoir for the mushroom. After the cultivation of mushrooms, the mushroom substrate and casing is directly loaded on truck and ready for disposal. From then on, the mixture is called "spent mushroom compost (SMC)".

Who is the vendor of the product?

The vendor of this product is Champost BDP (champostbdp@gmail.com), a small company located in Meulebeke in the Flanders region.

Which other product/technologies are provided by the vendor?

No other fertilisers are produced at the moment.

Which are the advantages of the products and the problems addressed?

Spent mushroom compost is an excellent source of humus which is readily available all-year-round. Although much of its nitrogen content has been used up by the composting and growing mushrooms, it remains, however, a good source of general nutrients (NPK plus a full range of trace elements), as well as a useful organic soil conditioner. Furthermore, it is free of pathogens and weed seeds and there are no impurities such as stones, plastic or glass. The product helps holding the water for a longer time in the soil during dry summers.

Which is the nutrient content of the product?

One ton of spent mushroom compost contains on average 340 kg DM, 214 kg OM, 6.3 kg N, 4.0 kg P₂O₅, 8.7 kg K₂O, 2.4 kg MgO, 0.9 kg Na₂O, 2.3 kg Cl and 45 kg CaO.

Which equipment and methods can be used to apply the product?

The fertiliser has a loose structure and can be applied using standard manure spreaders. For small scale application, it can be applied manually.

How to use the product?

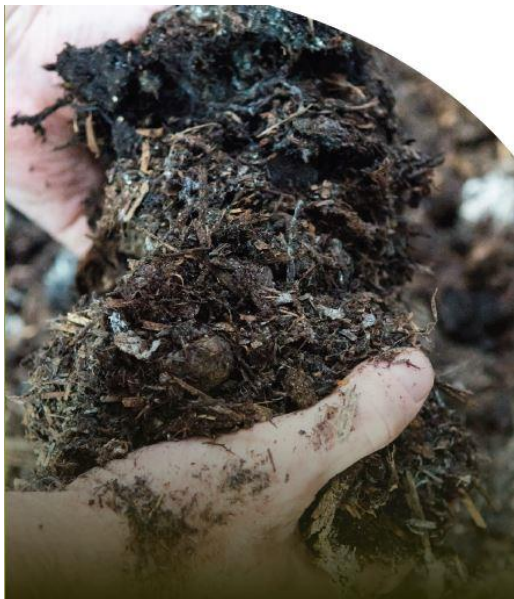
The product is readily available all-year-round and can be applied on all types of crops with an application dose of about 10-25 t/ha. The application dose is of course dependant on local legislations and crop demand. For start-up of lawn, a layer of 3-4 cm is recommended (3-4m³/100m²). For planting, a layer of 1 cm (1m³/100m²) is recommended. Good homogenisation is very important.

Which are the authority permits and in which EU countries?

There are no restrictions in EU for the application of this product.

How much does it cost?

The cost varies between 10€/m³ and 25€/m³, mainly depending on the amount and transport costs. Additionally composted SMC has an extra cost of 5€/m³. The additional composting of SMC lowers its salt content with 60%.



For more information: https://nutriman.net/farmer-platform/product/id_1986